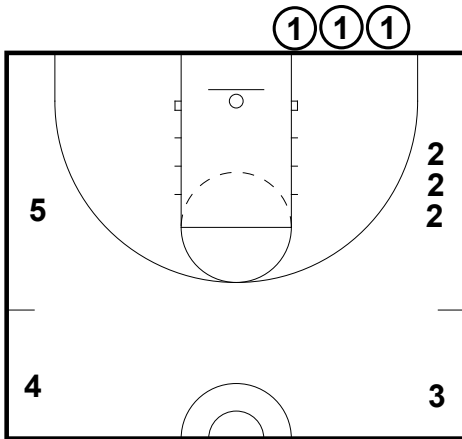
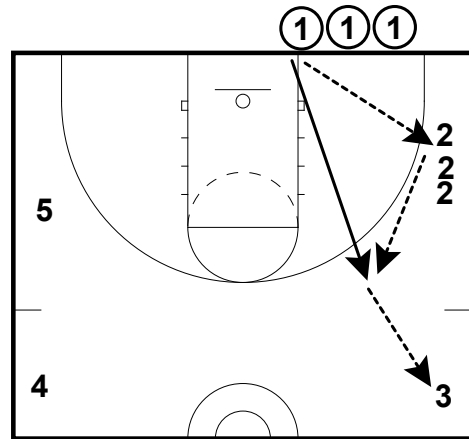


Stanford Passing

Frame 1



Frame 2



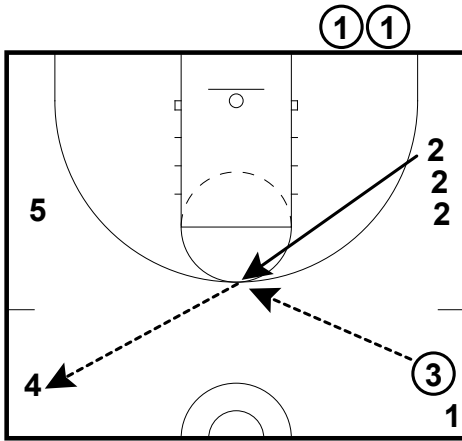
Initial Set-Up

* Three people in line 1. All with balls

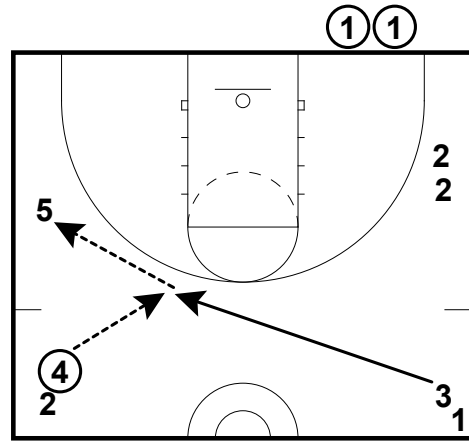
* Three people in line 2 and 1 or more people in each of the other lines.

#1 will pass to #2. #1 will cut to line #3. #2 will pass to #1. #1 will pass ahead to #3. #1 will go to line #3

Frame 3



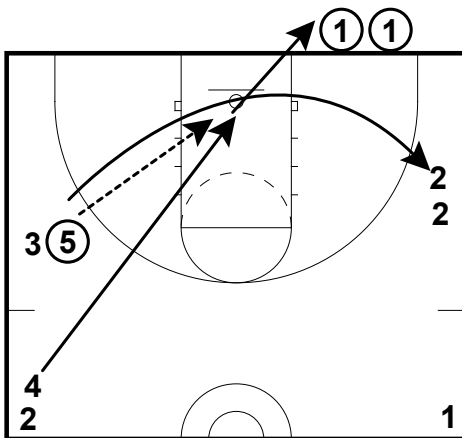
Frame 4



#2 will cut to line #4. #3 will pass to #2. #2 will pass ahead to line #4. #2 will go to line #4

#3 will cut to line #5. #4 will pass to #3. #3 will pass ahead to line #5. #3 will join line #5.

Frame 5



#4 will cut to the basket. #5 will hit #4 for a lay-up. #4 will go to line #1. #5 will rebound the ball, pass to line #1 and then go to line #2.